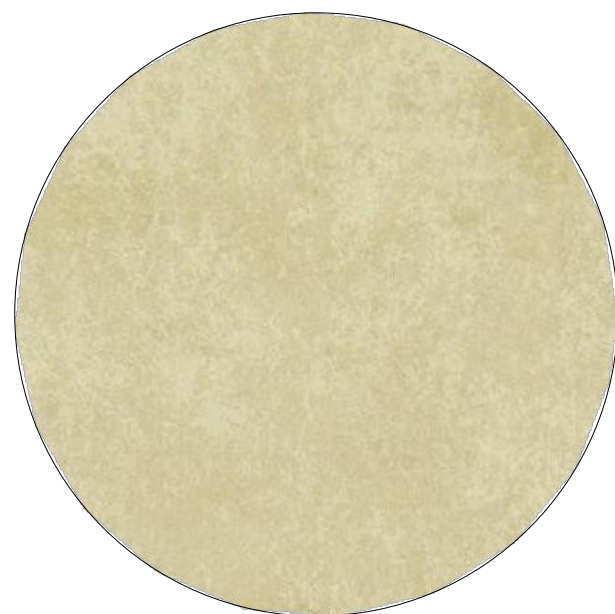


1 SMOOTH STUCCO FINISH
SW-7005 PURE WHITE
SHERWIN-WILLIAMS
OR EQUIVALENT APPROVED
BY ARCHITECT



2 SMOOTH STUCCO FINISH
AF-685 THUNDER
BENJAMIN MOORE
OR EQUIVALENT APPROVED
BY ARCHITECT



3 SMOOTH STUCCO FINISH
CHAMPAGNE GOLD
OR EQUIVALENT APPROVED
BY ARCHITECT



4 ALUMINUM CLADDING PANELS
CHAMPAGNE GOLD
OR EQUIVALENT APPROVED
BY ARCHITECT



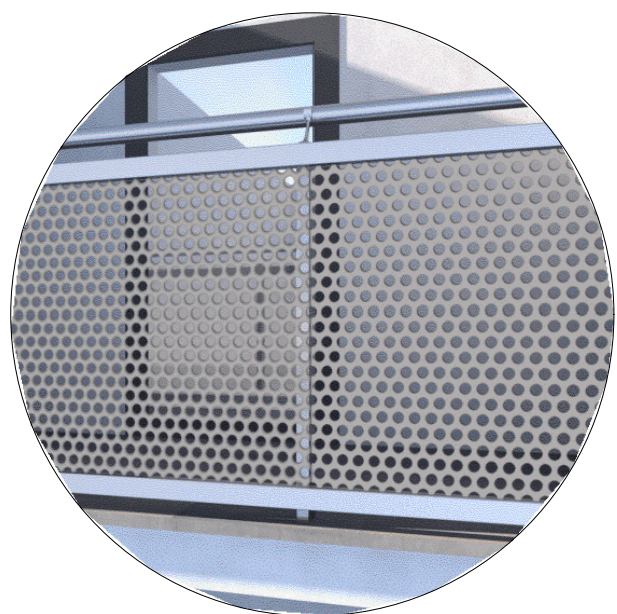
5 WOOD-POLYPROPYLENE COMPOSITE
NICHIIA RIFTSAWN CHESTNUT
OR EQUIVALENT APPROVED
BY ARCHITECT



6 TINTED GLASS FOR STOREFRONTS,
WINDOWS, BALCONY DOORS
VIRACON OPTIGRAY
OR EQUIVALENT APPROVED
BY ARCHITECT



7 ALUMINUM FRAME
2134-30 IRON MOUNTAIN
BENJAMIN MOORE
OR EQUIVALENT APPROVED
BY ARCHITECT



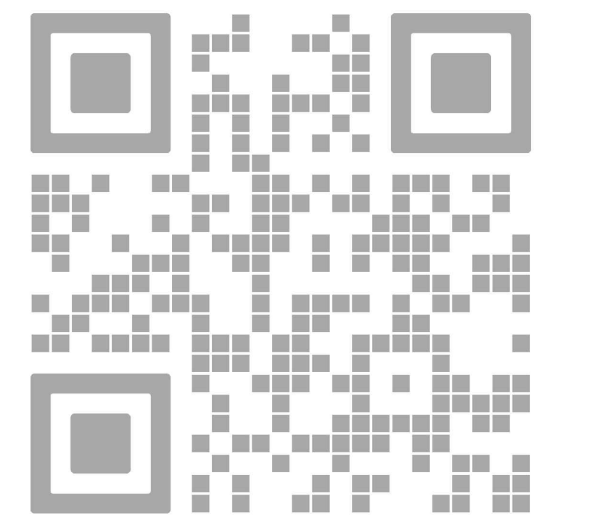
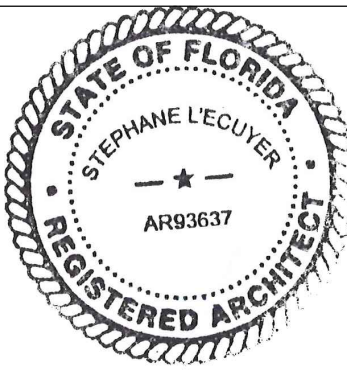
8 METAL MESH RAILING
CHAMPAGNE GOLD
OR EQUIVALENT APPROVED
BY ARCHITECT



9 FACTORY PAINTED
ALUMINUM EXTRUSIONS
WOOD COLOR
OR EQUIVALENT APPROVED
BY ARCHITECT



10 PARKING GARAGE SCREENING
VENTILATED METAL MESH



REV.	DATE	DESCRIPTION
01	05-13-2025	D.R.C. SUBMITTAL

ALL MEASUREMENTS MUST BE VERIFIED BEFORE
BEGINNING THE WORKS. NO MEASUREMENTS ARE TO
BE SCALED DIRECTLY FROM THIS DRAWING.

Key section

Client
VERA FUND
NICK POLYUSHKIN
& YURI KHARITONENKOV
TEL: 305.833.3303

Project
**1600 S FEDERAL HIGHWAY
(MIXED-USE PROJECT)**
1600 SOUTH FEDERAL HIGHWAY,
POMPAHO BEACH, FL 33062

Title	
SOUTH ELEVATION	
Drawn J. WU	Field ARCHITECTURE
Verified N. TREMBLAY	Scale as shown
Approved S. L'ECUYER	Date 05-28-2025
Project Manager J. WU	Dwg. no. A-502
Project 24-838	